

FIRST FLOOR

BUILDING T
3266 Greyhawk Court

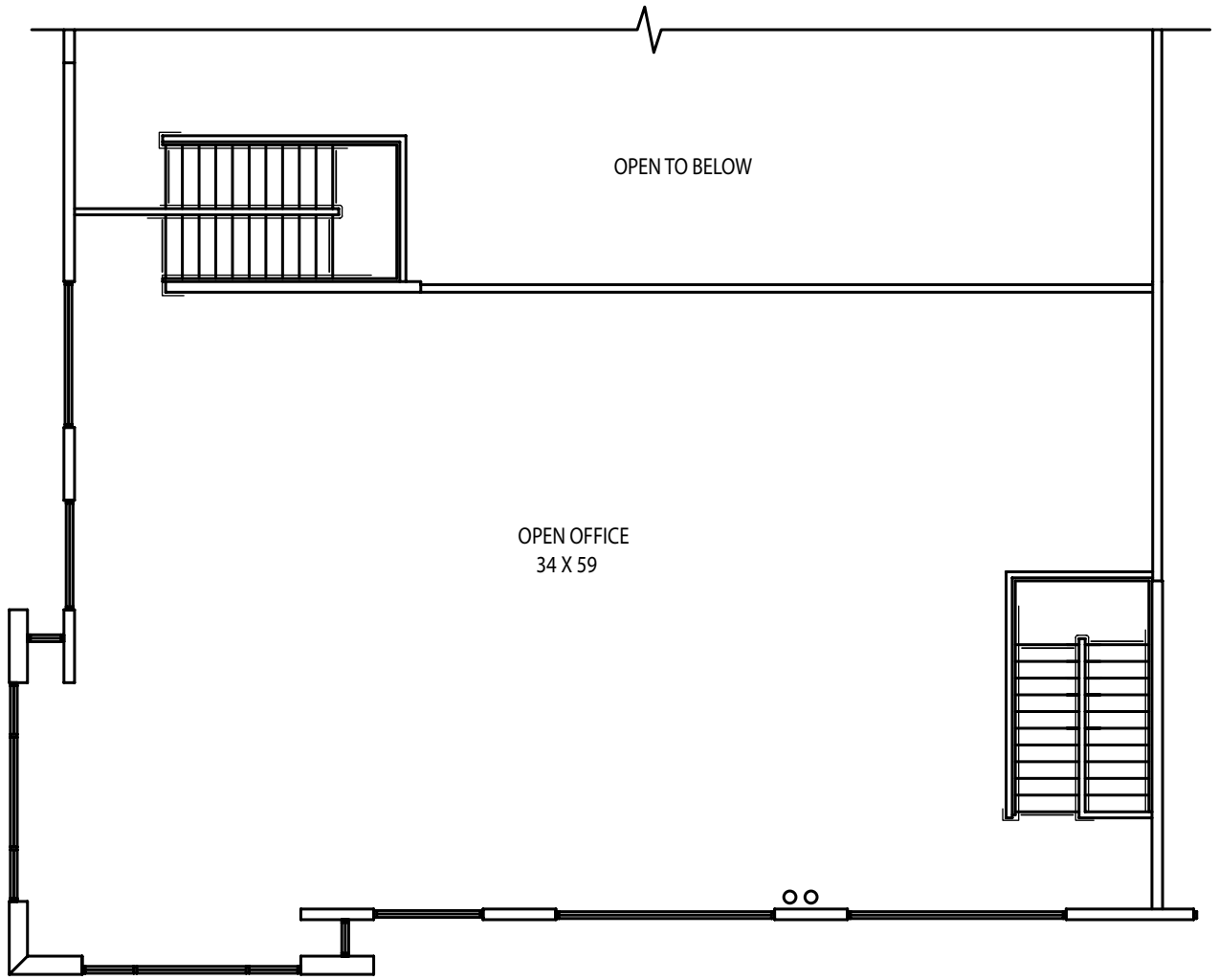
Total Building Area - Approx. 7,058 sf.

1st Floor Office Area - Approx. 2,218 sf.

2nd Floor Office Area - Approx. 2,192 sf.

Total Office Area - Approx. 4,410 sf.

See Second Floor Office On Next Page



SECOND FLOOR

Building T
3266 Greyhawk Court
2nd Floor Area - Approx. 2,192 sf.