

FIRST FLOOR

BUILDING J

3238 Greyhawk Court

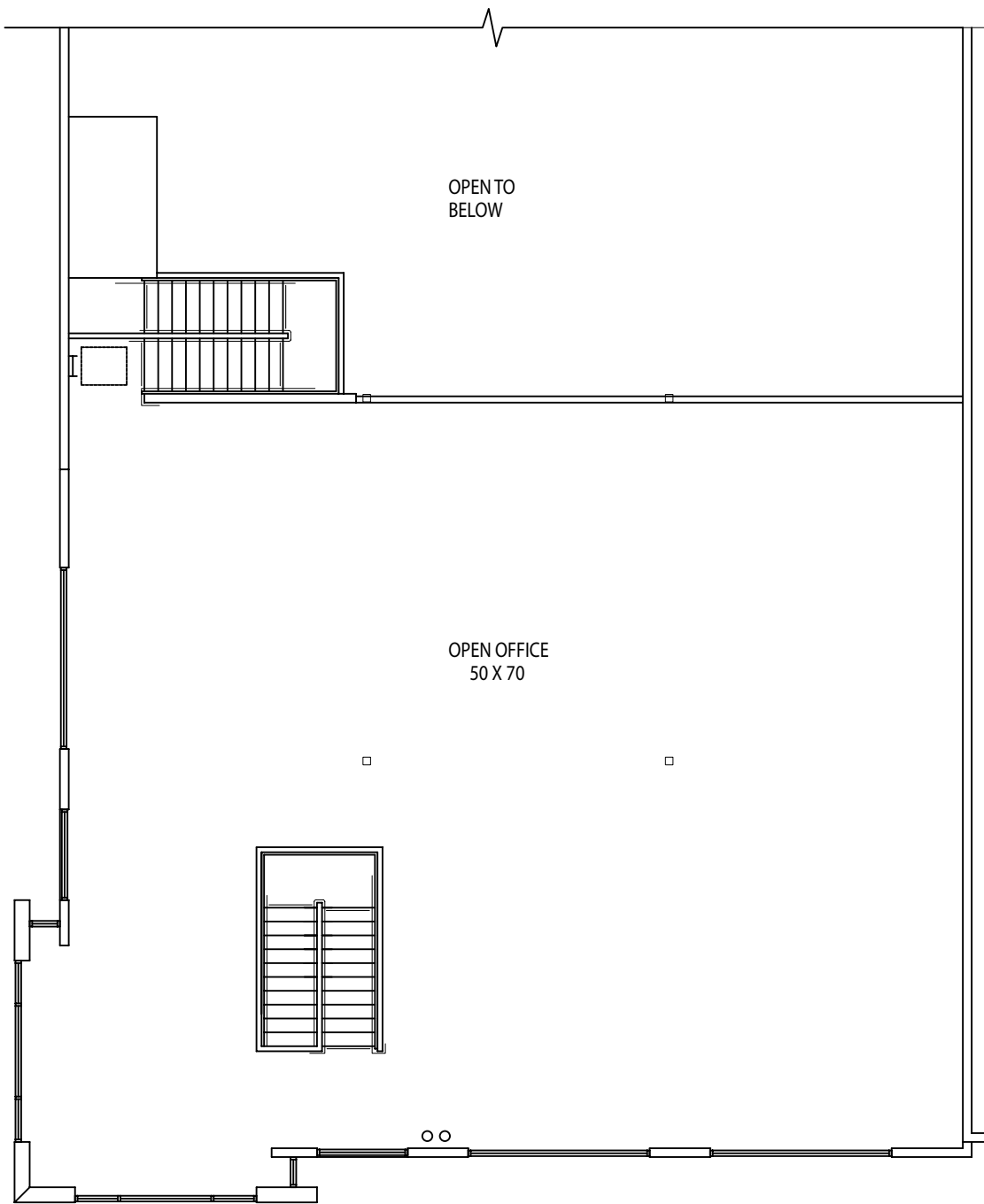
Total Building Area - Approx. 10,380 sf.

1st Floor Office Area - Approx. 3,150 sf.

2nd Floor Office Area - Approx. 3,154 sf.

Total Office Area - Approx. 6,304 sf.

See Second Floor Office On Next Page



SECOND FLOOR

Building J
3238 Greyhawk Court

2nd Floor Area - Approx. 3,154 sf.