

## BUILDING BB

3288 Greyhawk Court

Total Building Area - Approx. 12,058 sf.

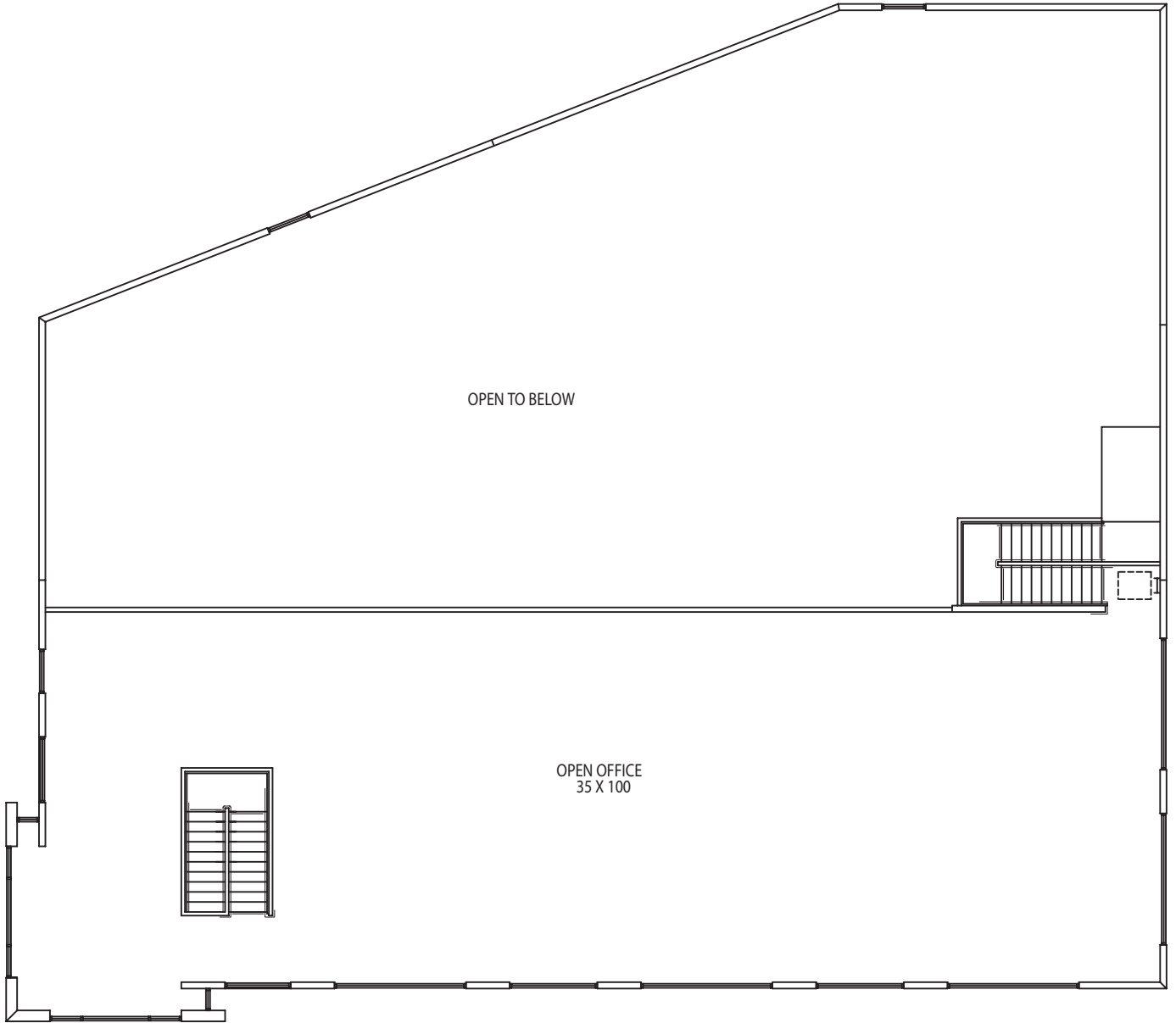
1st Floor Office Area - Approx. 3,730 sf.

2nd Floor Office Area - Approx. 3,732 sf.

Total Office Area - Approx. 7,462 sf.

## FIRST FLOOR

*See Second Floor Office On Next Page*



Building BB  
3288 Greyhawk Court

2nd Floor Area - Approx. 3,732 sf.

SECOND FLOOR